



# CONTENTS



## 01 Gachon University Gil Medical Center ..... 02

- Lee Gil-Ya: Milestones & Achievements
- Mission and Vision
- Hospital Overview
- Major Medical Equipments

## 04 International Healthcare Center ..... 25

- Center Introduction
- One-Stop System
- Additional Services
- Patient Testimonials

## 02 Departments & Treatments ..... 07

- Cerebrocardiovascular Center
- Cancer Center
- Medical Departments
- Treatments & Costs
- Physicians

## 05 Gachon Gil Foundation ..... 28

## 03 VIP Health Promotion Center ..... 22

- Center Introduction
- Health Check Up Programs

# Lee Gil-Ya: Milestones & Achievements



Dr. Lee Gil-Ya

Founder of Gachon University Gil Medical Center  
President of Gachon University

## Dr. Lee Gil-Ya

Founder of Gachon University Gil Medical Center  
(President of Gachon University)

- 1957 ▪ Graduated from Seoul National University College of Medicine
- 1958 ▪ Opened Lee Gil-Ya Obstetrics & Gynecology Clinic
- 1978 ▪ Founded Gil Medical Foundation
- 1981 - 2005 ▪ Served as Standing Committee Member and Vice Chairwoman, National Unification Advisory Council
- 1985 ▪ Awarded the Order of Civil Merit, Magnolia Medal
- 1998 ▪ Founded Gachon University of Medicine and Science
- 2002 ▪ Appointed as Chairwoman of Gachon Gil Foundation
- 2003 ▪ Awarded the Order of Civil Merit, Mugunghwa Medal
- 2009 ▪ Awarded the Order of Science and Technology Merit, Changjo Medal (1st Class)
- 2012 ▪ Named one of Newsweek's "150 Women Who Shake the World"
- 2012 - present ▪ President of Gachon University
- 2013 ▪ Named one of Forbes Asia's "48 Heroes of Philanthropy"
  - Received Plaque of Appreciation at the "110th Anniversary of Korean Immigration to Hawaii" (Korean Association of Hawaii)
- 2015 ▪ Awarded the Gold Medal of Humanity, Korean Red Cross
- 2019 ▪ Received the Seo Jae-pil Medical Award
- 2020 ▪ Awarded the Lions Clubs International Humanitarian Award
- 2024 ▪ Received the 54th "Korea Management Award" by the Korea Management Association

The Gachon Gil Foundation is dedicated to public service, fulfilling its social responsibility by caring for those in hardship and pain, and practicing patriotism to bring happiness to the people.

Philanthropy, service, and patriotism remain the unchanging founding spirit of the Foundation throughout the years.

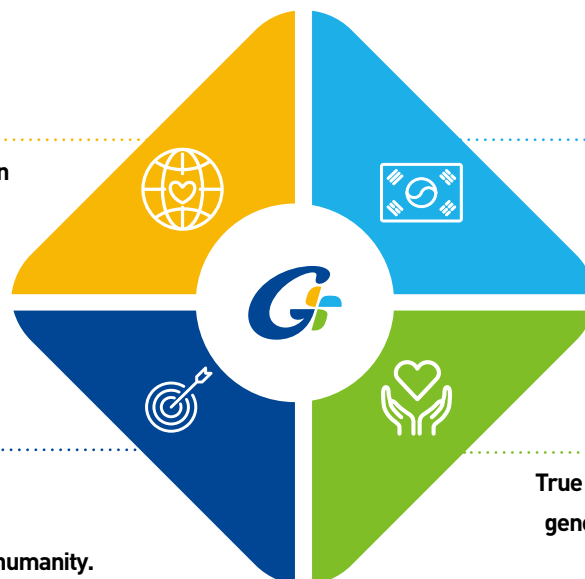
## Mission & Vision

### Philanthropy

We extend our care to those who live in the unseen corners of society.

### Vision

Through continuous innovation, we strive to advance medicine and bring health and happiness to all humanity.



### Patriotism

Nurturing individual talent is the essence of love for our nation.

### Public Service

True happiness begins with a heart that gives generously and serves others with sincerity.



# Gachon University Gil Medical Center (Established in 1958)



- |   |                                   |  |   |
|---|-----------------------------------|--|---|
| ① Main Building                                     | ④ National Health Check-up Center | ⑨ Dental Hospital                        | ⑫ Gachon University College of Medicine – Life Science Hall |
| ② Regional Trauma Center / Emergency Medical Center | ⑤ Kidney Center                   | ⑩ Gachon University College of Medicine  | ⑬ Funeral Hall  |
| ③ Cardiovascular Center / Cancer Center             | ⑥ A.I. Cancer Hospital            | ⑪ Gachon University Medical Science Hall | ⑭ Parking Tower   |
|   | ⑦ Women's Center                  |  |   |
|   | ⑧ Women's Cancer Hospital         |  |   |



Promotional Video

## Proximity to Incheon International Airport

35km, approx. 30minutes

## Incheon's Largest Tertiary Hospital

1,268 Beds

## National Research-Driven Hospital

Re-designated Four Consecutive Times  
Leading in Brain Disease Diagnostics and Metabolic Drug Development  
World's First Monkey Brain Imaging with 11.74T MRI

## Top-Tier Medical Quality Rating

Top-Rated 2% Nationwide,  
Among Only Eight Hospitals Selected  
by the Ministry of Health and Welfare

## Specialized Centers in Operation

Main Building, Cancer Center, Women's Center,  
Robotic Surgery Center, Cerebrocardiovascular Center  
Regional Trauma Center and Emergency Medical Center  
(Operates Korea's First Doctor Helicopter and Doctor Car)

## World-Class Medical Services



Certified Healthcare  
Institution by the  
Ministry of Health  
and Welfare





Official Hospital  
Designated by the  
Olympic Council of Asia  
(OCA)



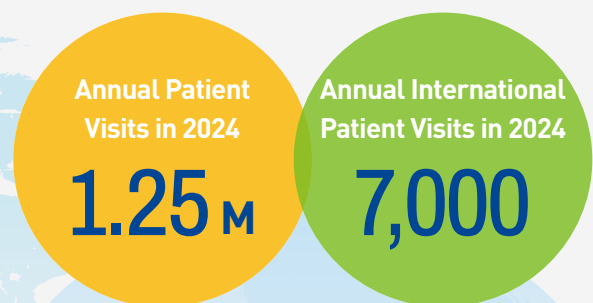
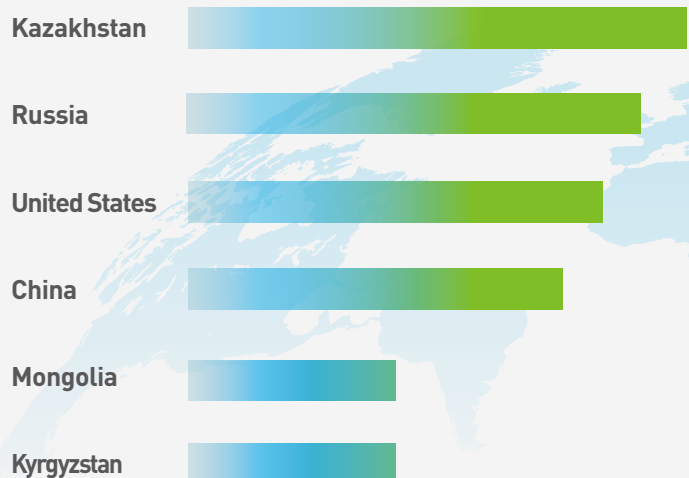
Official Partner  
Hospital for  
APEC 2025





Medical Departments	Medical Staff and Employees	Number of Beds
36 Specialties Including Gastroenterology, Neurology, Neurosurgery, General Surgery, Obstetrics and Gynecology, Urology, Orthopedics and More	<div>Physicians 483</div> <div>Nurses 2,051</div> <div>Clinical &amp; Admin Staff 726</div> <div>  <b>Total 3,260</b> </div>	<div>General beds 985</div> <div>Specialized beds 127</div> <div>Intensive care beds 156</div> <div>  <b>Total 1,268</b> </div>

## TOP 6 Countries of Origin for International Patients (2024)



**The Most Visited Hospital  
in Incheon**

# Major Medical Equipments

## Computed Tomography (CT)

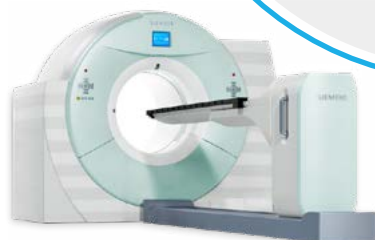
An effective diagnostic tool for quick identification of structural abnormalities across a wide area

- SOMATOM Definition AS
- SOMATOM Definition Flash
- SOMATOM Definition Edge / Edge Plus



**CT  
6units**

**Advanced  
Equipment Enables Fast  
and Accurate Testing**



**PET CT  
2units**

## Magnetic Resonance Imaging (MRI)

A high-resolution imaging technique for detailed evaluation of the brain, nerves, and soft tissues

- Magnetom Skyra 3.0T
- Magnetom Vida 3.0T



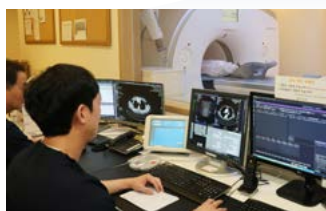
**MRI  
6units**

## Positron Emission Tomography-Computed Tomography (PET-CT)

A highly advanced imaging modality specialized for cancer diagnosis, recurrence, and metastasis assessment

- Biograph 6
- Biograph mCT 128

## Enhancing Accuracy and Efficiency with an AI-Powered Automated Diagnostic System



### AI-Rad Companion Chest CT

#### Applicable to

Major Thoracic Organs  
Including the Lungs,  
Heart, Aorta, and Spine



### Dr. Answer 2.0 Smart Endo (AI Endoscopy System)

#### Applicable to

Gastric Cancer



### Lunit INSIGHT MMG

#### Applicable to

Breast Cancer

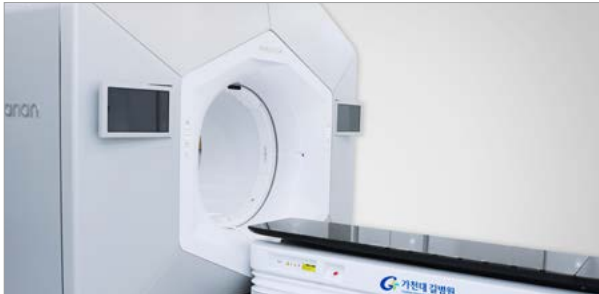


### Heuron System integrating Brain MRI and AI

#### Applicable to

Early Diagnosis of  
Dementia and Parkinson's  
Disease

## Radiotherapy Equipment



### • Halcyon

A latest-generation device specialized for fast, quiet, and precise radiation therapy

**Applicable to** Prostate Cancer, Cervical Cancer, Rectal Cancer, and More



### • TrueBeam

A highly advanced, multifunctional system designed for high-precision, complex radiation therapy

**Applicable to** Head and Neck Cancer, Brain Tumors, Pancreatic Cancer, Spinal Metastasis, and Other Cancers Requiring High Precision



### • Clinac iX (2units)

A widely used and reliable system backed by extensive experience in cancer treatment

**Applicable to** Breast Cancer, Skin Cancer, Lung Cancer, Liver Cancer, Prostate Cancer, and more  
Particularly Effective for Moving Organs such as Lung and Liver Due to Respiratory Gating

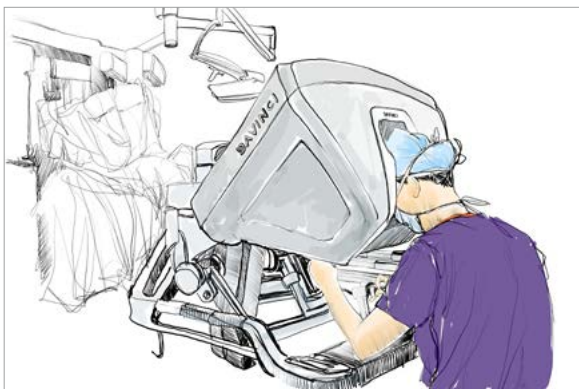


### • AlignRT

A contact-free 3D surface imaging system that eliminates the need for skin markers

**Applicable to** Suitable for Most Types of Cancer

## Surgical Equipment



### • DaVinci Xi Surgical System (2 units)

The latest 4th-generation robotic surgery system for highly precise procedures in complex areas.

**Applicable to** Urology, Gynecology, General Surgery, Thoracic Surgery, ENT Procedures

**Advantages** Minimally Invasive, Highly Precise Operation, Faster Recovery and Reduced Complications



# Cerebrocardiovascular Center

1

**HIRA Adequacy  
Evaluation Grade 1**  
(Health Insurance Review & Assessment Service)



Coronary  
Artery



Myocardial  
Infarction



Stroke

- In 1997, Achieved Asia's First Successful Simultaneous Heart and Lung Transplant
- In 2018, Performed Incheon's First Artificial Heart (LVAD) Implantation
- Rated Grade 1 for Coronary Artery Bypass Surgery in HIRA Assessment for 5 Consecutive Years
- Rated Grade 1 for Myocardial Infarction and Stroke for 9 Consecutive Terms

- Operates a Hybrid Operating Room Enabling Both Angiography and Surgery Simultaneously
- Rated Top-Tier Emergency Medical Center by the Ministry of Health and Welfare for 3 Consecutive Years
- Operates Korea's First Airborne Emergency Room, "Doctor Helicopter"

## Hybrid Surgery Scene

Hybrid surgery combines traditional surgery with minimally invasive procedures and uses real-time imaging equipment to enhance surgical accuracy. This enables complex operations to be performed more safely and efficiently.



# Cardiology



## Physicians



- Eak-Kyun Shin
- Mi-Seung Shin
- Seung-Hwan Han
- Woong-Chol Kang
- Wook-Jin Chung
- Yae Min Park
- Kyoung-Hoon Lee
- Soon-Yong Suh
- Jeong-Geun Moon
- Min-Su Kim
- Youngwoo Jang
- Kyung-Eun Ha
- Joon-Pyo Lee
- Tae-IL Yang
- Yoon-Sun Won
- Jin Wi
- Kil-Yoon Pack
- Sung-Hwa Choi

## Key Areas of Expertise



- Angina Pectoris (AP)
- Dyslipidemia
- Atherosclerosis
- Myocardial Infarction (MI)
- Hypertension
- Valvular Heart Disease (Aortic Valve)
- Heart Failure
- Pulmonary Hypertension
- Heart Transplantation

## Recommended Physicians



**Dr.  
Seung-Hwan Han**

AP, MI,  
Dyslipidemia,  
Hypertension,  
Atherosclerosis,  
Valvular Heart Disease



**Dr.  
Wook-Jin Chung**

Heart Failure,  
Pulmonary Hypertension,  
Valvular Heart Disease,  
Cardiomyopathies,  
Heart Transplantation

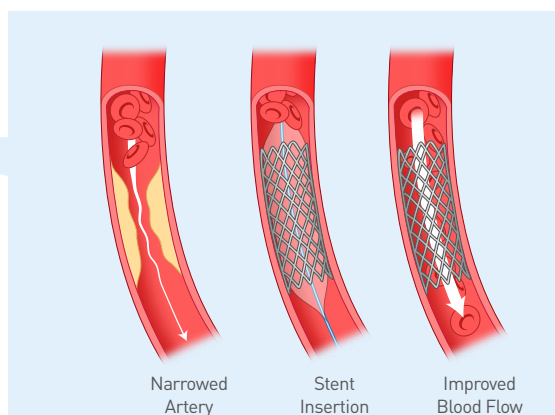
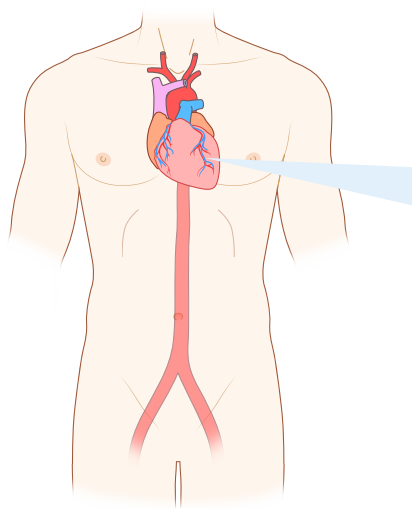


**Dr.  
Mi-Seung Shin**

AP, MI,  
Heart Failure,  
Hypertension,  
Valvular Heart Disease

## Key Procedures & Costs

● Diagnostic Tests ● Procedure ● Hospital Stay



Coronary Stent

### Angina Pectoris

- Diagnostic Tests
- Hospital Stay

**\$ 6,500**  
**2-3 Days**

- Procedure (Coronary Angiography & 1 stent)
- Stent Cost (varies by stent type)
- Intravascular Ultrasound (IVUS) (during procedure, if needed)

**\$ 10,000 - 15,000**  
**\$ 5,000 - 15,000**  
**\$ 4,000 - 4,500**

\* Hospitalization fees are based on a 4-bed room. The listed costs are average estimates, and the actual expenses and length of stay may vary depending on the patient's condition.



# Neurosurgery

## Physicians



- Woo-Kyung Kim
- Chan-Jong Yoo
- Young-Bo Kim
- Kawng-Woo Park
- Eun-Young Kim
- Tae-Seok Jeong
- Gi-Taek Yee
- Myeong-Jin Kim
- Han-Byeol Park
- Dong-Won Shin
- Han-San Oh
- Youn-Kwan Park

## Key Areas of Expertise



- Cerebrovascular Diseases (Stroke, Cerebral Aneurysm/Hemorrhage)
- Cerebrovascular Intervention
- Parkinson's Disease
- Headache
- Brain Tumors
- Facial Pain
- Dizziness/Vertigo
- Skull Base Disorders
- Hemifacial Spasm
- Radiosurgery

## Recommended Physicians



**Dr.  
Chan-Jong Yoo**

Cerebrovascular Diseases, Cerebrovascular Procedures, Headache, Dizziness



**Dr.  
Gi-Taek Yee**

Brain Tumors, Skull Base Disorders, Radiosurgery, Facial Pain, Hemifacial Spasm

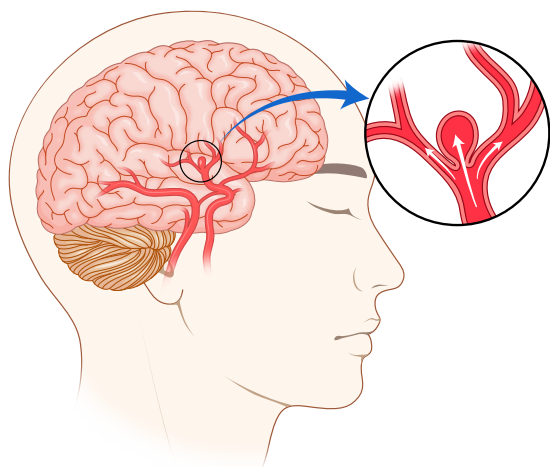


**Dr.  
Myeong-Jin Kim**

Cerebrovascular Diseases, Cerebrovascular Intervention (minimally invasive, without craniotomy), Headache, Dizziness

## Key Procedures & Costs

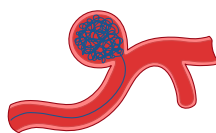
● Diagnostic Tests ● Surgery ● Hospital Stay



Schematic Diagram of Cerebral Aneurysm Rupture



Aneurysm Neck Clipping Using Clips



Coil Embolization Using Coils



Stent-Assisted Cerebral Aneurysm Treatment

### Cerebral Aneurysm

- Diagnostic Tests
- Clipping
- Hospital Stay

**\$ 7000 - 7500**  
**\$ 35,000 - 50,000**  
**5-7 Days**

- Coil Embolization
- Hospital Stay
- Stent
- Hospital Stay

**\$ 22,000 - 30,000**  
**3 Days**  
**\$ 15,000 - 30,000**  
**3 Days**

\* Hospitalization fees are based on a 4-bed room. The listed costs are average estimates, and the actual expenses and length of stay may vary depending on the patient's condition.



# Orthopedics / Spine Surgery



Orthopedics



Spine Surgery

## Physicians



- Doh-Hyun Moon
- Beom-Koo Lee
- Hong-Gi Park
- Deuk-Soo Jun
- Jae-Ang Sim
- Jung-Eun Lee
- Seong Son
- Byung-Hoon Lee
- Dong-Uk Jin
- Ryu-Kyoung Cho

## Key Areas of Expertise



- Trauma (Ligament Injuries, Bone Fractures)
- Osteomyelitis
- Knee Arthroplasty (Primary/Revision)
- Revision Surgery (Failed Joint Replacement/Fracture Fixation)
- Degenerative Conditions (Spinal Stenosis)
- Meniscus Transplantation
- Knee Stem Cell Therapy

## Recommended Physicians



**Dr.  
Beom-Koo Lee**

ACL Reconstruction,  
Knee Arthroplasty,  
Stem Cell Cartilage  
Therapy, Meniscus  
Transplantation



**Dr.  
Jae-Ang Sim**

Knee Disorders,  
Arthroplasty for  
Arthritis, Sports  
Medicine (Arthroscopy),  
Trauma, Osteomyelitis



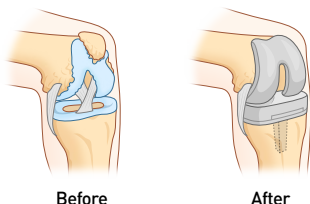
**Dr.  
Seong Son**

Spinal Tumors,  
Spinal Deformities,  
Osteoporosis,  
Spinal/Cranial Trauma,  
Minimally Invasive Spine  
Surgery (MISS)

## Key Procedures & Costs

● Diagnostic Tests ● Surgery ● Hospital Stay

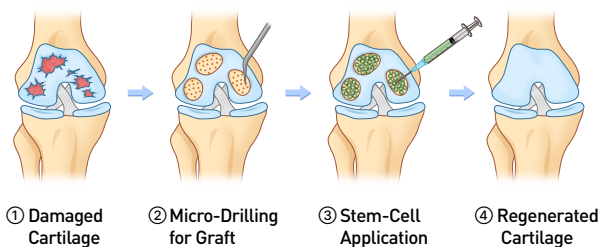
### Total Knee Arthroplasty (TKA)



Before

After

### Stem-Cell Cartilage Therapy



① Damaged Cartilage

② Micro-Drilling for Graft

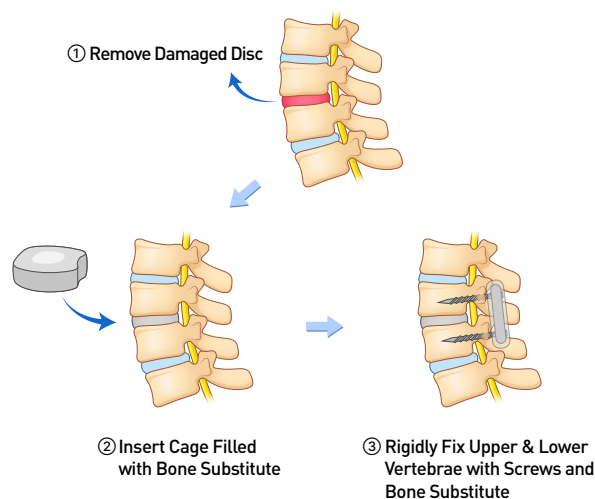
③ Stem-Cell Application

④ Regenerated Cartilage

### Knee Surgery

- Diagnostic Test \$ 1,700
- Total Knee Arthroplasty (TKA) \$ 18,000
- Stem-Cell Cartilage Therapy \$ 22,000
- Hospital Stay 5-8 Days

### Spinal Fusion Process



① Remove Damaged Disc

② Insert Cage Filled with Bone Substitute

③ Rigidly Fix Upper &amp; Lower Vertebrae with Screws and Bone Substitute

### Spine Disc Surgery

- Diagnostic Tests \$ 1,700
- Minimally Invasive Disc Surgery \$ 16,000
- Spinal Fixation/Fusion \$ 33,000
- Hospital Stay 5-8 Days

\* Hospitalization fees are based on a 4-bed room. The listed costs are average estimates, and the actual expenses and length of stay may vary depending on the patient's condition.

# Cancer Center

## 1 Top Grade (Grade 1) in HIRA Quality Assessment (Health Insurance Review & Assessment Service)



Stomach  
Cancer



Liver  
Cancer



Colorectal  
Cancer



Breast  
Cancer

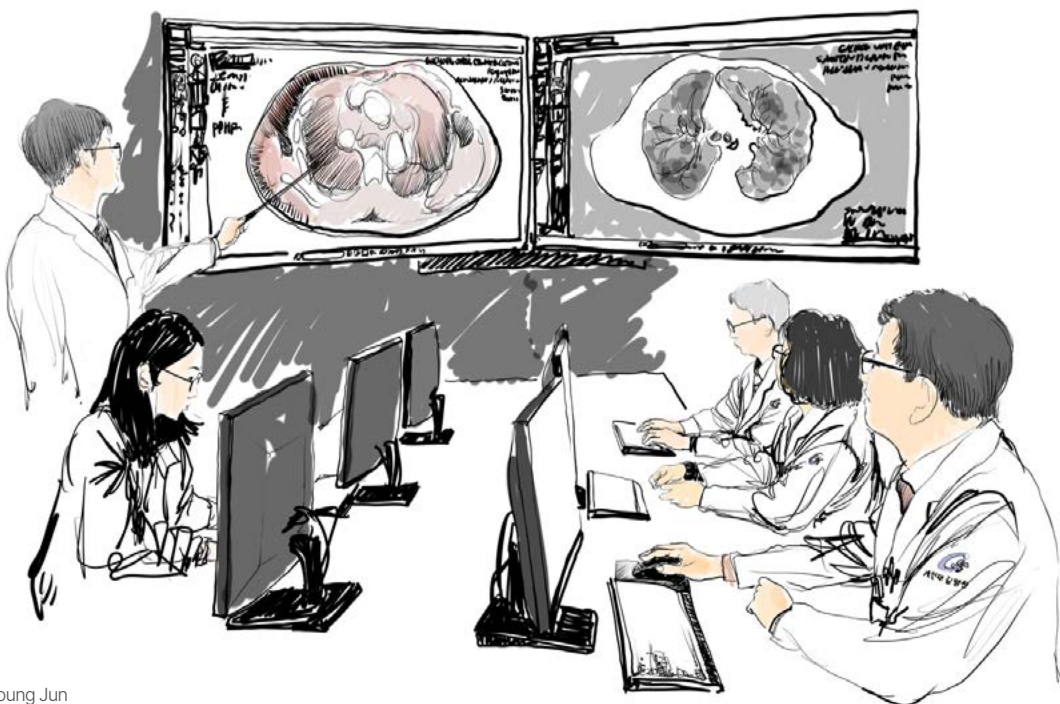


Lung  
Cancer

- Korea's First Government-Designated Regional Cancer Center Among Private University Hospitals
- No. 1 Regional Cancer Center (2022) - Top Rating for Three Consecutive Years in the Ministry of Health and Welfare's Comprehensive Evaluation
- Grade 1 in HIRA Appropriateness Assessment for Major Cancers: Stomach, Colorectal, Liver, Breast, and Lung
- Personalized, Systematic Counseling by Dedicated Coordinators for Each Cancer Type
- Multidisciplinary Consultation, Where Specialists from Various Departments Collaborating on Cancer Diagnosis and Treatment
- Advanced Cancer Treatment Systems : Da Vinci Xi, Halcyon, TrueBeam
- Nation's Largest Sterile Hematopoietic Stem Cell Transplantation Unit

## Multidisciplinary Care

Specialists from various departments collaborate in a single session to comprehensively assess each patient's condition. They work together to determine the optimal diagnosis and develop a stage-specific treatment plan. This system provides more coordinated and personalized cancer care.





# Thyroid Cancer

## Physicians



- Yoo-Seung Chung
- Jae Bong Choi
- Keun-Chul Lee
- You-Na Hwang

## Key Areas of Expertise



- Thyroid Cancer
- Thyroid Diseases
- Robotic Surgery
- Goiter
- Parathyroid Diseases
- Endoscopic Procedures

## Recommended Physicians



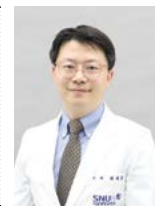
**Dr.  
Yoo-Seung Chung**

Thyroid Cancer,  
Thyroid/Parathyroid  
Surgery, Robotic/  
Endoscopic Surgery



**Dr.  
Keun-Chul Lee**

Thyroid Cancer,  
Thyroid/Parathyroid  
Surgery, Robotic/  
Endoscopic Surgery

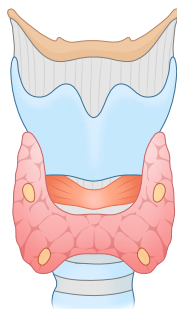


**Dr.  
Jae Bong Choi**

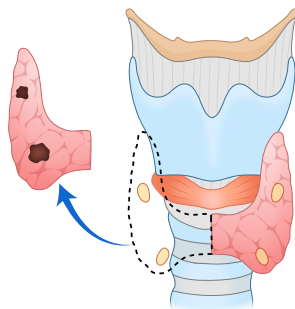
Thyroid Cancer, Goiter,  
Graves' Disease,  
Parathyroid Tumors,  
Robotic Thyroid Surgery

## Key Procedures & Costs

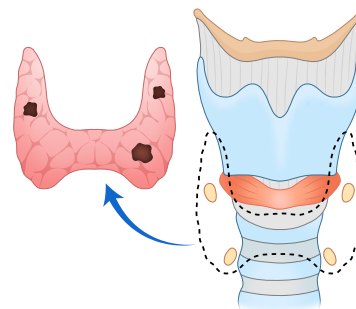
● Diagnostic Tests ● Surgery ● Hospital Stay



Normal



Partial Thyroidectomy



Total Thyroidectomy

### Thyroid Cancer Surgery

- Diagnostic Tests
- Partial Thyroidectomy
- Total Thyroidectomy
- Hospital Stay

\$ 2,000  
\$ 12,000  
\$ 17,000  
4-7 Days

### Robotic Surgery

- Diagnostic Tests
- Surgery
- Hospital Stay

\$ 2,000  
\$ 18,000 ~  
3-5 Days

\* Hospitalization fees are based on a 4-bed room. The listed costs are average estimates, and the actual expenses and length of stay may vary depending on the patient's condition.





# Breast Cancer

## Physicians



- Heung-Kyu Park
- Yong-Soon Chun

- Yunyeong Kim
- Hyun-Jik Kim

## Key Areas of Expertise



- Breast Cancer
- Breast Tumors
- Other Breast Diseases

- Metastatic Breast Cancer
- Male Breast Diseases

## Recommended Physicians



**Dr.  
Heung-Kyu Park**

Breast Cancer (Metastatic,  
Male Breast Cancer),  
Breast Tumors



**Dr.  
Yong-Soon Chun**

Malignant Breast  
Cancer,  
Breast Tumors,  
Other Breast Diseases



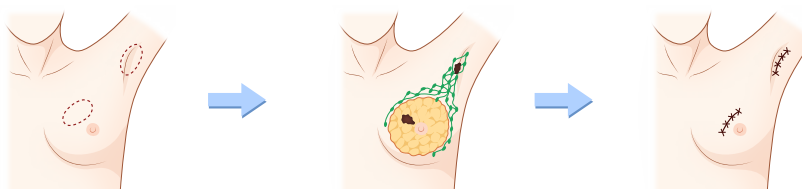
**Dr.  
Yunyeong Kim**

Breast Cancer,  
Breast Tumors,  
Other Breast Diseases

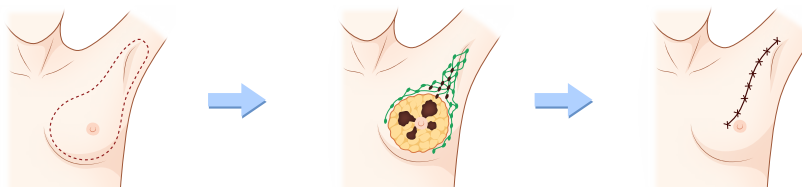
## Key Procedures & Costs

● Diagnostic Tests ● Surgery ● Hospital Stay

### Partial Mastectomy



### Total Mastectomy



### Breast Cancer

- Diagnostic Tests
- Partial Mastectomy
- Total Mastectomy
- Hospital Stay

\$ 8,100  
\$ 18,000  
\$ 20,000  
10-12 Days

### Mammotome

- Diagnostic Tests
- Procedure
- Hospital Stay

\$ 1,800  
\$ 2,500 - 3,000  
Outpatient

\* Hospitalization fees are based on a 4-bed room. The listed costs are average estimates, and the actual expenses and length of stay may vary depending on the patient's condition.



# Gynecology

## Physicians



- Kwang-Beom Lee
- Jin-Woo Shin
- Seungho Lee
- Soo-Hyun Oh

## Key Areas of Expertise



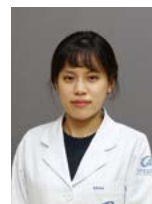
- Gynecologic Oncology (Cervical/Ovarian/Uterus/Vulvar)
- Uterine Fibroids
- Osteoporosis
- Pelvic Organ Prolapse
- Gynecologic Laparoscopic Surgery

## Recommended Physicians



**Dr. Kwang-Beom Lee**

Cervical Cancer, Ovarian Cancer,  
Uterine Cancer, Vulvar Cancer,  
Pelvic Organ Prolapse,  
Gynecologic Laparoscopic Surgery

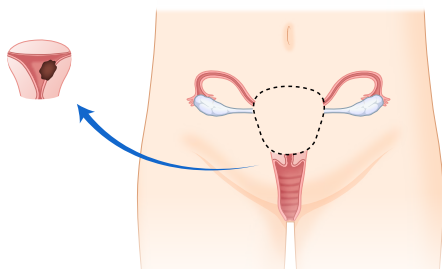


**Dr. Soo-Hyun Oh**

Gynecologic Oncology,  
Osteoporosis, Vulvar Cancer,  
Uterine Cancer, Ovarian Cancer

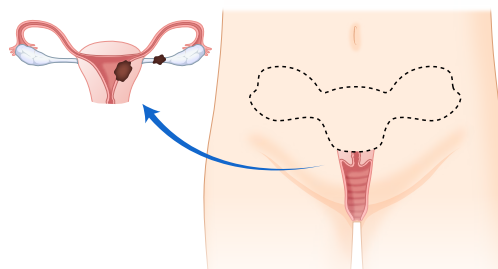
## Key Procedures & Costs

● Diagnostic Tests ● Surgery ● Hospital Stay



Partial Hysterectomy

Uterine Cancer



Radical Hysterectomy

Uterine Cancer + Ovarian Cancer

### Uterine Cancer

- Diagnostic Tests
- Laparoscopic Surgery
- Robotic Surgery
- Hospital Stay

\$ 6,000  
\$ 18,000  
\$20,000 ~  
7-12 Days

### Ovarian Cancer

- Diagnostic Tests
- Surgery
- Hospital Stay

\$ 6,000  
\$ 30,000  
7-12 Days

### Cervical Cancer

- Diagnostic Tests
- Surgery
- Hospital Stay

\$ 6,000  
\$ 24,000  
7-12 Days

\* Hospitalization fees are based on a 4-bed room. The listed costs are average estimates, and the actual expenses and length of stay may vary depending on the patient's condition.



# Gastroenterology

## Physicians

- Ju-Hyun Kim
- Yeon-Suk Kim
- Oh-Sang Kwon
- Yun-Soo Kim
- Kwang-An Kwon
- Kyung-Oh Kim
- Jun-Won Chung
- Jeong-Ho Kim
- Eui Joo Kim
- Seung-Kak Shin
- Huapyeong Kang
- Han-Nah Lee
- Yeong-Hun Han
- Yoon-Seok Lee

## Key Areas of Expertise



- Pancreaticobiliary Cancer (Pancreatic, Bile Duct, Gallbladder, Ampullary)
- Endoscopic Resection of Early Cancers (Esophageal/Gastric/Colorectal)
- Diagnostic and Therapeutic Endoscopy (Polypectomy, Hemostasis, Stent)
- Inflammatory Bowel Disease (Crohn's Disease, Ulcerative Colitis)
- Gastroesophageal Reflux Disease (GERD)
- Liver Transplantation, Transarterial Chemoembolization (TACE)

## Recommended Physicians



**Dr.  
Jun-Won Chung**

Gastric/Colorectal/  
Esophageal Cancer,  
Gastrointestinal  
Endoscopy  
(Stomach/Colon),  
Therapeutic Endoscopy



**Dr.  
Ju-Hyun Kim**

Liver Cancer,  
Liver Cirrhosis,  
Liver Transplantation,  
TACE



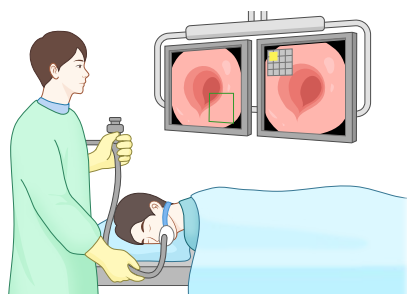
**Dr.  
Huapyeong Kang**

Pancreatic/Bile Duct/  
Gallbladder Cancer, EUS,  
Therapeutic Endoscopy

## Key Procedures & Costs

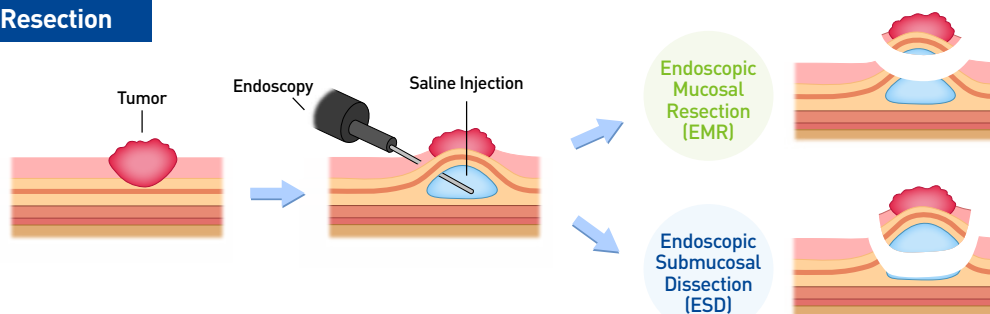
● Diagnostic Tests ● Procedure ● Hospital Stay

### Endoscopic Examination



- Gastroscopy and Colonoscopy (EGD + CFS) **\$ 1,100**  
• Hospital Stay **2-3 Days**
- Endoscopic Ultrasound (EUS) **\$ 650**  
• Hospital Stay **Outpatient or 2-3 Days**
- Endoscopic Retrograde Cholangiopancreatography (ERCP) **\$ 3500 - 4500**  
• Hospital Stay **2-3 Days**

### Endoscopic Resection



- EMR **\$ 3,500**  
• Hospital Stay **2-3 Days**
- ESD **\$ 5,500**  
• Hospital Stay **2-3 Days**

\* Hospitalization fees are based on a 4-bed room. The listed costs are average estimates, and the actual expenses and length of stay may vary depending on the patient's condition.



# Gastric and Colorectal Cancer



General Surgery



Colorectal Clinic

## Physicians

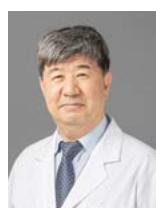
- Woon-Kee Lee
- Yeon-Ho Park
- Won-Suk Lee
- Doo-Ho Lee
- Jae-Hun Yang
- Jun-Young Yang
- Jeong-Heum Baek
- Doo-Jin Kim
- Young-Bae Cheon

## Key Areas of Expertise



- Cancer Surgery (Gastric/Hepatobiliary/Pancreatic/Colorectal/Peritoneal)
- Tumor Surgery (Liver/Pancreatic/GIST)
- Acute Liver Failure
- Peritoneal Metastasis
- Robotic Surgery
- Liver Transplantation
- HIPEC & Cytoreductive Surgery (CRS)

## Recommended Physicians



**Dr. Woon-Kee Lee**  
Gastric Cancer, Small Intestine Cancer, Gastric Diseases, Gastrointestinal Surgery



**Dr. Yeon-Ho Park**  
Liver/Kidney Transplantation, Liver/Bile Duct Cancer, Laparoscopic Surgery, Cholelithiasis



**Dr. Doo-Jin Kim**  
Liver/Pancreatic Tumors, Bile Duct Cancer, Acute Liver Failure, Whipple Procedure, Liver Transplantation



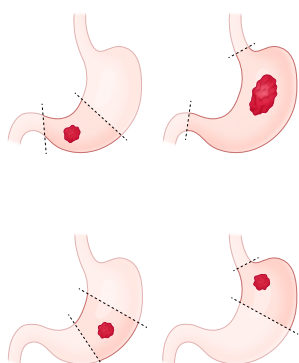
**Dr. Jeong-Heum Baek**  
Minimally Invasive Surgery(Laparoscopic/Robotic), Colon/Rectal/Anal Cancer, Recurrent Colorectal Cancer



**Dr. Won-Suk Lee**  
Colorectal/Small Intestine/Peritoneal Cancer, Peritoneal Metastasis, Robotic Surgery, HIPEC&CRS

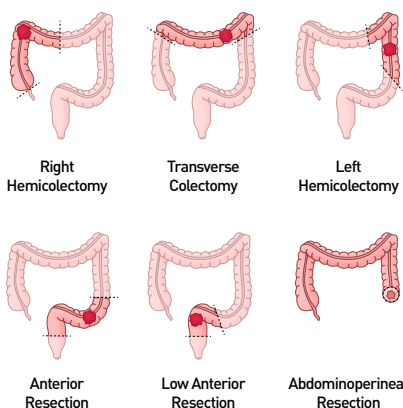
## Key Procedures & Costs

● Diagnostic Tests ● Surgery ● Hospital Stay



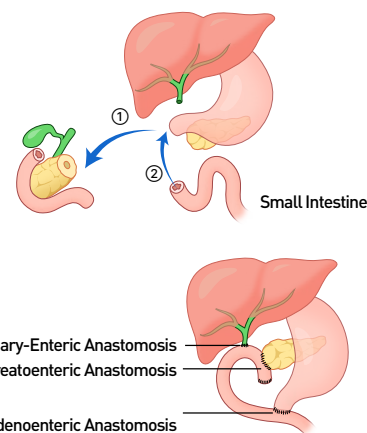
### Gastric Cancer

- Diagnostic Tests \$ 5,700
- Partial Gastrectomy \$ 25,000
- Total Gastrectomy \$ 30,000
- Hospital Stay 10-15 Days



### Colorectal Cancer

- Diagnostic Tests \$ 5,700
- Surgery \$ 37,000
- Hospital Stay 10-15 Days



### Whipple Procedure

- Diagnostic Tests \$ 5,700
- Surgery \$ 37,000
- Hospital Stay 10-15 Days

\* Hospitalization fees are based on a 4-bed room. The listed costs are average estimates, and the actual expenses and length of stay may vary depending on the patient's condition.

# Hematology and Oncology



Hematology



Oncology

## Physicians

- Dong-Bok Shin
- Eun-Kyung Cho
- Young Saing Kim
- Sun-Jin Sym
- Ji-Hong Bae
- Joo-Hwan Park
- Jang-Ho Cho
- Jae Hoon Lee
- Kwai Han Yoo
- Byung-Woo Yoon

## Key Areas of Expertise



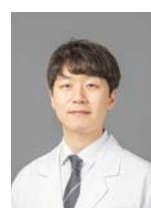
- Cancer (Lung/Breast/Gastric/Colorectal/Esophageal/Hepatobiliary/Pancreatic/Genitourinary)
- Hematologic Malignancies (Multiple Myeloma, Lymphomas, Leukemias (incl. Lymphocytic))
- Sarcomas
- Coagulation Disorders
- Cellular Therapies: Hematopoietic Stem Cell Transplantation (HSCT), CAR T-Cell Therapy
- Intensive Care for Patients with Hematologic Malignancies

## Recommended Physicians



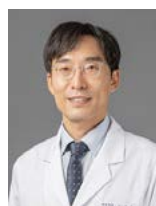
### Dr. Sun-Jin Sym

Gastric Cancer,  
Colorectal Cancer, HPB Cancer,  
Gastrointestinal Stromal Tumors (GIST)



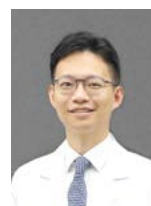
### Dr. Joo-Hwan Park

Genitourinary Cancers,  
Lung Cancer, Breast Cancer



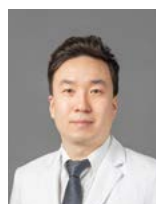
### Dr. Young Saing Kim

Lung Cancer, Sarcomas,  
Gynecologic Cancers,  
Esophageal Cancer



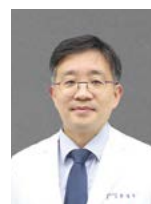
### Dr. Jang-Ho Cho

Lung Cancer, Gastric Cancer,  
Head/Neck and Esophageal Cancers,  
Brain Tumor



### Dr. Kwai Han Yoo

Lymphoma,  
Acute Lymphoblastic Leukemia (ALL),  
HSCT, CAR T-Cell Therapy,  
Intensive Care for Hematologic Malignancy

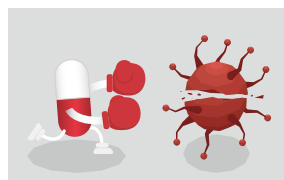


### Dr. Byung-Woo Yoon

Multiple Myeloma, Lymphoma,  
Lymphocytic Leukemias,  
Coagulation Disorders, HSCT,  
CAR T-Cell Therapy

## Key Treatments & Costs

● Diagnostic Tests ● Therapy ● Consultation



Providing optimal care aligned with international standards

- Diagnostic Tests \$ 300 - 1,200
- Chemotherapy (per session) \$ 1,500 - 5,500
- Multidisciplinary Consultation \$ 400 - 500

\* The cost varies for each patient according to the medication used



# Radiation - Oncology

## Physicians

- Kyu-Chan Lee
- Seok-Ho Lee
- KiHoon Sung
- Hyun-Ju Kim
- Joongyo Lee

## Key Areas of Expertise



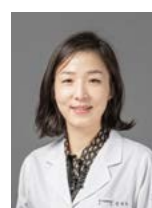
- Breast/Genitourinary/Lung Cancer
- Colon/Rectal/Anal Cancer
- Hematologic Malignancies
- Head & Neck Cancer, Skin Cancer
- Brain/Spinal Tumors
- Malignant Tumors

## Recommended Physicians



**Dr. KiHoon Sung**

Breast Cancer,  
Benign Breast Tumors



**Dr. Hyun-Ju Kim**

Lung Cancer,  
Genitourinary Cancer,  
Hematologic Cancer



**Dr. Joongyo Lee**

Brain/Spinal Tumors,  
Colon/Rectal/Anal Cancer,  
Breast Cancer

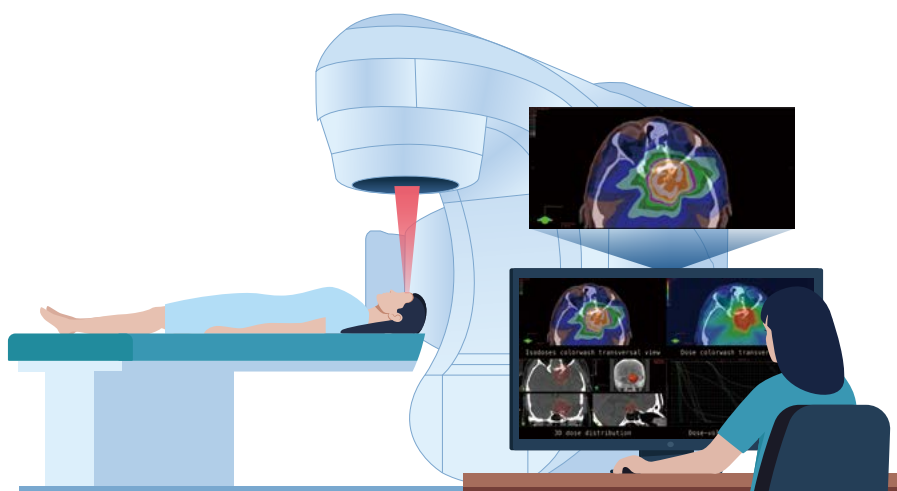


**Dr. Seok-Ho Lee**

Head/Neck Cancer,  
Pediatric Cancer,  
Skin Cancer, Sarcoma

## Key Treatments & Costs

- Treatment Planning
- Therapy
- Consultation



Advanced medical equipment enables fast, accurate and precise treatment

- Treatment Planning
- Radiation Therapy (per session)
- Multidisciplinary Consultation

**\$ 3,500 - 6,000**  
**\$ 800 - 2,000**  
**\$ 400 - 500**

\* The cost varies for each patient according to the medication used



# Urology

## Physicians

- Tae Beom Kim
- Kyung-Jin Chung
- Tae-Young Park
- Chang-Hee Kim
- Kwang Taek Kim
- IL-Woo Park

## Key Areas of Expertise



- Cancer (Prostate/Bladder/Kidney)
- Benign Prostatic Hyperplasia(BPH): HoLEP Laser Surgery
- Urinary Tract Disorders (Urinary Incontinence, Overactive Bladder(OAB))
- Urolithiasis (Kidney/Ureteral/Bladder Stones)
- Robotic Surgery

## Recommended Physicians



### Dr. Kyung-Jin Chung

Urologic Cancers (Robotic Surgery),  
BPH, Urolithiasis, Voiding Dysfunction,  
Pediatric Urology



### Dr. Tae Beom Kim

Robotic Surgery (Prostate/Kidney/Bladder),  
BPH, HoLEP, Urolithiasis,  
OAB, Urinary Incontinence



### Dr. Kwang Taek Kim

Robotic Surgery  
(Prostate, Kidney, Bladder), BPH,  
Female Urinary Incontinence

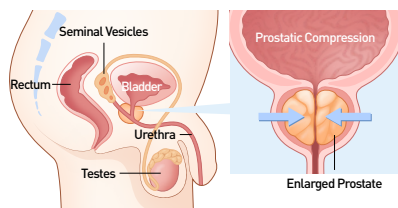


### Dr. Chang-Hee Kim

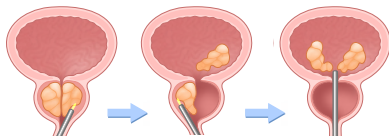
Voiding Dysfunction/OAB,  
Female Urologic Diseases,  
Prostate Disorders, Urolithiasis,  
Urologic Tumors

## Key Procedures & Costs

● Diagnostic Tests ● Surgery ● Hospital Stay

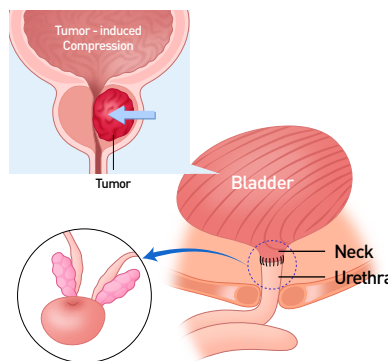


### HoLEP Surgery



### Benign Prostatic Hyperplasia

- Diagnostic Tests \$ 1,300
- Robotic Surgery \$ 14,000
- Hospital Stay 5-10 Days



### Prostate Cancer

- Diagnostic Tests \$ 2,900
- Biopsy (incl. 1-day admission) \$ 2,500
- Laparoscopic Surgery \$ 23,000
- Robotic Surgery \$ 28,000 ~
- Hospital Stay 5-10 Days

### Kidney Cancer

- Diagnostic Tests \$ 2,900
- Laparoscopic Surgery \$ 22,000
- Robotic Surgery \$ 24,000 ~
- Hospital Stay 5-10 Days

### Bladder Cancer

- Diagnostic Tests \$ 2,900
- Surgery \$ 10,000
- Hospital Stay 5-7 Days

\* Hospitalization fees are based on a 4-bed room. The listed costs are average estimates, and the actual expenses and length of stay may vary depending on the patient's condition.





# Otorhinolaryngology

## Physicians

- Heung-Eog Cha
- Gyu-Cheol Han
- Chang-Hyun Cho
- Joo Hyun Jung
- Woo-Ri Park
- Seon-Tae Kim
- Dong Young Kim
- Ju-Hyung Lee
- Woongsang Sunwoo

## Key Areas of Expertise



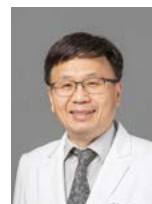
- Head & Neck Tumors (Oral Cavity/Pharynx/Larynx/Salivary Glands/Thyroid)
- Snoring, Sleep Disorder
- Rhinosinusitis, Rhinoplasty
- Voice Disorders
- Other Head & Neck Diseases

## Recommended Physicians



**Dr. Dong Young Kim**

Benign/Malignant Diseases  
(Oral Cavity/Pharynx/Larynx/  
Salivary Glands/Thyroid), Voice Disorders

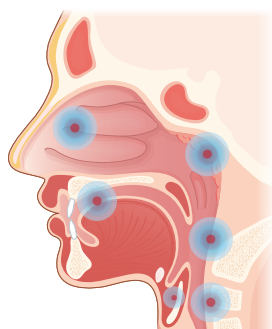


**Dr. Seon-Tae Kim**

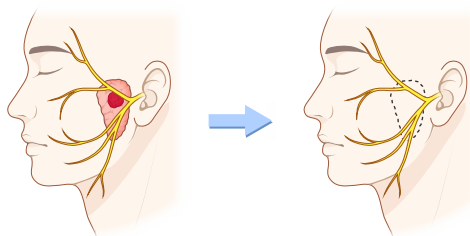
Rhinosinusitis  
(Sinusitis/Allergic Rhinitis),  
Snoring, Sleep Disorder, Rhinoplasty

## Key Procedures & Costs

● Diagnostic Tests ● Surgery ● Hospital Stay



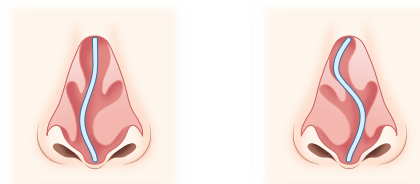
Primary Sites of Head & Neck Cancer



### Salivary Gland Cancer

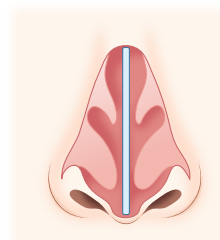
- Diagnostic Tests
- Genetic Test
- Surgery
- Hospital Stay

\$ 4,700  
\$ 5,000 - 7,000  
\$ 22,000  
3-7 Days



C-type

S-type



Normal Nose (no septal deviation)

### Deviated Nasal Septum

- Diagnostic Tests
- Surgery
- Hospital Stay

\$ 1,100  
\$ 8,000  
5-8 Days

\* Hospitalization fees are based on a 4-bed room. The listed costs are average estimates, and the actual expenses and length of stay may vary depending on the patient's condition.



# Plastic and Reconstructive Surgery

## Physicians

- Yang-Woo Kim
- Jin-Han Cha
- Hyo-Heon Kim
- YuJin Kim
- Jeong-Tae Kim

## Key Areas of Expertise



- Facelift (Mini/Full), Brow Lift, Facial Liposuction, Fat Grafting
- Eyelid Surgery, Wrinkle Rejuvenation
- Scar Revision, Cutaneous/Soft-Tissue Tumors
- Rhinoplasty, Complex Revision Rhinoplasty
- Trauma Induced Reconstruction (Face/Hand Surgery)
- Reconstructive Surgery (Chronic Wounds, Pressure Ulcers, Burns)

## Recommended Physicians



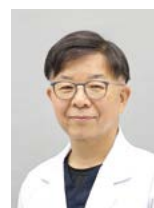
**Dr.  
Hyo-Heon Kim**

Mini Facelift,  
Full Facelift,  
Brow Lift



**Dr.  
Jeong-Tae Kim**

Reconstructive Surgery,  
Cutaneous/Soft-Tissue  
Tumors, Scar Revision



**Dr.  
Jin-Han Cha**

Excision of Benign  
Skin Tumors,  
Facial Liposuction,  
Fat Grafting

## Key Procedures & Costs

● Diagnostic Tests ● Surgery



### Benign Tumor Excision

- Diagnostics Tests
- Surgery

\$ 550 ~  
\$ 1,100 ~

\* Hospitalization fees are based on a 4-bed room. The listed costs are average estimates, and the actual expenses and length of stay may vary depending on the patient's condition.

# VIP Health Promotion Center



## Enhanced Expertise

- GI Endoscopy and Ultrasound Examinations Performed Directly by Specialists of Gastroenterology and Radiology
- Safe and Reliable Sedation Endoscopy Management with Dedicated Nurse Anesthetists Stationed in the Recovery Room
- Introduction of Heuron, an AI Software for Early Diagnosis of Dementia and Parkinson's Disease



## Advanced Equipment & Rigorous Hygiene

- Latest Equipment Ensuring Accurate Examinations
- Fast and Precise Testing Process Supported by an RFID-Based System
- Safe Endoscope Reprocessing to Block Infection Pathways
- Thorough Cleanliness Management of Equipment and Facilities



## Prompt Consultation & Results Delivery

- Consultations Provided within 2-3 Days
- Fast Referral to Specialists when Abnormalities are Detected
- Multilingual Reports and Imaging CDs Available



## Comfortable Environment & Respect for Privacy

- Limited Number of Daily Patients for Personalized Service
- VIP Lounge with Panoramic Views
- Private VIP rooms



Certified as  
an Excellent  
Endoscopy Unit



Accredited Excellent  
Comprehensive Health  
Screening Center

## Post Check-up Service



Health Screening



Outpatient



Surgery



Recovery

# Health Check-up Program Introduction

## Junior Checkup



**KRW 700,000 / Exam time 2 hours**

A health screening program for adolescents aged 15–19

- |                         |                               |                                  |                        |
|-------------------------|-------------------------------|----------------------------------|------------------------|
| · Weight / Height       | · Blood Type                  | · Liver/Kidney/Thyroid Function  | · Urinalysis           |
| · Blood Pressure, Pulse | · Comprehensive Anemia        | · Vit D, Rheumatoid Factor, Goit | · ECG, PFT             |
| · Body Composition      | · Comprehensive Diabetes      | · Pancreatic Enzymes             | · Chest X-ray (PA/Lat) |
| · Dental Examination    | · Coagulation Profile         | · Tumor Marker (Liver)           | · Thyroid Ultrasound   |
| · Vision / Hearing Test | · Electrolytes, Lipid Profile | · Hepatitis A/B/C, Syphilis, HIV | · Abdominal Ultrasound |

## Essential Checkup



**Men: KRW 680,000, Women: KRW 750,000 / Exam time 2.5 hours**

The most essential program to check your current health status and screen for major diseases

▶ Available for all ages

- |  |                               |   |                           |
|--|-------------------------------|---|---------------------------|
| · Weight / Height  | · Blood Type                  | · Liver/Kidney/Thyroid Function                                     | · Urinalysis              |
| · Blood Pressure, Pulse  | · Anemia                      | · Vit D, Rheumatoid Factor, Goit                                    | · Electrocardiogram (ECG) |
| · Body Composition Analysis  | · Diabetes                    | · Tumor Markers (Liver, Pancreas, Colon, Prostate (M), Ovarian (F)) | · Lung Function Test      |
| · Dental Examination   | · Coagulation Profile         | · Hepatitis A/B/C, Syphilis, HIV                                    | · Chest X-ray (PA)        |
| · Hearing Test   | · Electrolytes, Lipid Profile | · Abdominal Ultrasound  |                           |
| · Eye Examinations (Vision, Fundus, Intraocular Pressure)              |                               | · Women's Examinations (Mammogram, Liquid-Based Pap Test)           |                           |
| · Gastroscopy without Sedation (* additional KRW 120,000 for Sedation) |                               |   |                           |

## Specialized Package

Essential  
Check-up  
+  
Specialized  
Options



**Men: KRW 890,000, Women: KRW 960,000 / Exam time 3 hours**

### Endoscopy-Free Easy Screening Program

Convenient  
Check-up

- Pick 2 Special Examinations from the Following:
  - Low-Dose Chest CT, Ultrasound (Carotid Artery, Prostate, Thyroid, Breast, Uterine)
- \* Example: Chest CT + Thyroid Ultrasound

Lung Basic  
Check-up

### Early Detection Program for Lung & Gastric Health

- Gastroscopy with Sedation
- Low-Dose Chest CT

GI (Gastrointestinal)  
Basic Check-up

### Early Detection Program for Gastrointestinal Disorders and Cancers

- Gastroscopy + Colonoscopy with Sedation





## Cancer Standard

Essential  
Check-up  
+  
Additional  
Tests



**Men: KRW 2,200,000, Women: KRW 2,400,000 / Exam time 5 hours**

An advanced early cancer detection program focusing on gastric, colorectal, liver, lung, pancreatic, thyroid, prostate, and breast cancers

▶ Recommended for ages 40+

- Comprehensive Anemia & Diabetes Panels
- Bone Density Test
- Low Dose Chest CT
- Prostate Ultrasound (M)
- Carotid Artery Ultrasound
- Abdominopelvic CT (+)
- Breast Ultrasound, Uterine Ultrasound, Human Papillomavirus (HPV) (F)
- Sex Hormones
- Thyroid Ultrasound
- Gastroscopy + Colonoscopy with Sedation

## Heart & Brain Premium

Cancer  
Standard  
+  
Additional  
Tests



**Men: KRW 5,500,000, Women: KRW 5,800,000 / 2-day checkup**

A precision program designed for early detection of cardiovascular diseases and evaluation of brain structure and pathology

▶ Recommended for smokers aged 45+ or individuals aged 50+

- Stress Test
- Echocardiography
- Brain MRI + MRA (including Dementia, Parkinson's, and Cerebral Atrophy Screening)
- Bowel Cleansing Medication Provided (Tablet - Orapang)
- Arteriosclerosis Test
- Coronary CT (+)
- MastoCheck (F)
- Abdominopelvic CT (+)
- VIP Room Provided (No Accommodation)

\* First-Visit Benefits: ApoE Genotyping

## Premium

Heart & Brain  
Premium  
+  
Additional  
Tests



**Men: KRW 7,800,000, Women: KRW 8,100,000 / 2-day checkup**

An advanced program developed for early detection of cancer and cardio-cerebrovascular diseases, carefully tailored to each individual's medical history and needs

▶ Recommended for ages 50+

- ai-CANCERCH (Esophageal, Lung, Pancreas, Colon, Ovarian, and Liver Cancers)
- Immune Cell (NK) Test
- BioAge
- VIP Room Provided (No Accommodation)
- Pick 1 Special Examination from the Following (① or ②):
  - ① Pick 2 MRI Options : Cervical, Lumbar, Knee (One Side), Foot (One Side), Pelvis
  - ② PET-CT (✓) (if selected, Performed on Day 3)

## VIP Premium

Heart & Brain  
Premium  
+  
Additional  
Tests



**Men: KRW 10,600,000, Women: KRW 10,900,000 / 3-day checkup**

A premium all-in-one screening program offering a comprehensive health evaluation

▶ Recommended for ages 50+

- Pick 2 MRI Options : Cervical, Lumbar, Knee (One Side), Foot (One Side), Pelvis
- PET-CT (✓) (if selected, performed on Day 3)
- One-night stay in VIP inpatient room

**Day 1** : Check-up – Admission – Bowel Prep → **Day 2** : Check-up – Discharge → **Day 3** : PET-CT

All Check-ups Include a Pre-examination Consultation, Result Consultation, Multilingual Report, and CD of Images

(F) Female (M) Male (+) Contrast-Enhanced Imaging (✓) Radionuclide Imaging

# International Healthcare Center

The International Healthcare Center at Gachon University Gil Medical Center provides a wide range of customized services to ensure that international patients receive care comfortably in Korea. Medical coordinators fluent in English, Russian, Chinese, and Mongolian are stationed on site, offering one-on-one dedicated support throughout the entire process—from appointment scheduling to post-treatment care.



2016  
Global Healthcare  
Contribution Award –  
Minister of Health and  
Welfare Commendation



2017  
Global Healthcare Contribution  
Award – President of Korea  
Health Industry Development  
Institute (KHIDI) Commendation



2019  
Recognition for Excellence  
in Attracting International  
Patients – Mayor of Incheon  
Award

## Multilingual Interpretation Support



### English

+82-32-460-3213  
+82-10-6272-9567 (WhatsApp)  
gihc@gilhospital.com

### Chinese

+82-32-460-9069  
+82-10-3370-9069  
china@gilhospital.com  
WeChat : gilhospital

### Russian

+82-32-460-9074  
+82-10-6800-9074 (WhatsApp)  
ru@gilhospital.com  
gil.rusteam@gmail.com

### Mongolian

+82-32-460-9063  
+82-10-5034-6265 (WhatsApp)  
mgl@gilhospital.com  
gmc.int

### Overseas Koreans

+82-32-460-9072  
+82-10-7723-9074 (Kakao)  
gnos@gilhospital.com  
GiLGIMS

## One-Stop System

Gachon University Gil Medical Center Provides a  
"One-Stop Service," Covering Everything  
from Consultation to Treatment

1

Medical Inquiry



2

Treatment Plan,  
Estimated Costs,  
and Length of Stay



3

Visit Arrangements  
(Hotel, Pick-up,  
Appointment)



4

Arrival  
(Airport Pick-up Service)



5

Consultation  
and Treatment



6

Departure  
(Airport Sending Service)



### Additional Services



24/7 Hotline



Airport Pick-up and  
Sending Service



Hotel  
Reservation



Inpatient  
Supplies



Global Insurance  
Claim Support

## Patient Testimonials

自从我认识嘉泉大吉医院，已经快一年了。我对在贵医院经历的所有服务都非常满意！特别感谢会说中文的金先生的帮助。我在周六给他打电话时腿受伤了，他毫不犹豫地帮助了我，并且为了治疗牺牲了晚上时间直到很晚。还帮助我看牙科治疗。如果我的朋友来韩国，我一定会推荐他们去嘉泉大吉医院。希望你未来一切顺利。



- 杨\*\*

This was my first surgery in life, and I was initially very anxious. However, my experience at GIL Hospital was overwhelmingly positive.



From the skilled orthopedic specialists and attentive nurses to the English-speaking coordinators who checked on me daily, I felt supported every step of the way. The hospital staff did their best to communicate clearly, and the facilities were clean and comfortable.

I also enjoyed the delicious Korean meals during my stay.

Thanks to excellent care and anesthesia, my surgery went smoothly, and I recovered quickly with no side effects. I'm truly grateful to the entire team at GIL Hospital.

I need one more similar surgery, and without hesitation, I will return here again.

- Iuliia Ste\*\*\*\*\*

Клиника Гиль — это не просто современное медицинское учреждение. Это место, где видна миссия помогать человеку не на словах, а на деле.



Благодаря международной работе центр оказывает помощь не только жителям Южной Кореи, но и многим пациентам из-за рубежа, включая и Казахстан.

Моя личная история с клиникой началась с профессоров 이광범 и 김영생, без которых я бы не могла даже надеяться на перспективу. А также с сотрудниками международного отдела, которые сопровождали меня с самого начала и продолжают поддерживать на каждом этапе.

От всего сердца желаю коллективу клиники Гиль дальнейшего процветания, новых достижений и крепкого здоровья. Спасибо каждому, кто каждый день помогает пациентам — с уважением, терпением и заботой.

- Лил\*\* Шаим\*\*\*

2025 оны 2сарын 9нд Инчоны онгоцны буудалуу унаа явуулж тосож авч буудалд хүргэж өгсөн сайхан сэтгэлээр угтсан эмнэлэгийн хамт олонд талархаж байна. Намайг Дэлэг овогтой Цэрэндаш гэдэг монгол улсын иргэн БНСУ-д нэгэн эмнэлэг түрүү булчирхайн хавдарын онош сонсоод бушуухан эмнэлэг хайх ажилдаа орсон бөгөөд энэ үед Гил эмнэлэгтэй холбогдож нэмэлт шинжилгээ хийлгэн мэс заслын өдрөө товлосон юм. 2025 оны 2дугаар сарын 14-ны өглөө өглөө 7цагаас 16цаг хүртэл бүтэн 8цагын турш түрүү булчирхайн хавдарын хагалгааг маань хийж өгсөн чадвартай эмч Чан Гён Жин эмч болон монгол орчуулагч охин Ч.Номин нарт маш их баярлаж байна. Мэс заслын дараа настай миний бие яах бол гэж айж байсаныг нуухгүй гэхдээ сүүлийн үеийн дэвшилтэд технологи ашиглан робот мэс засал хийсэн бөгөөд энэхүү мэс заслын дараагаар өвдөлт бага мөн эдгэрэлт хурдан байдагийг өөрийн биеэр мэдэрлээ. 2сарын 13-21ны хооронд урологийн тасагт хэвтэн эмчлүүлэх хугацаанд хэвтэн эмчлүүлэх тасгийн сувилагч асрагч нар маш найрсаг үйлчилж аав шигээ санаж асарсанд маш их баярлаж байна.



- Цэрэнд\*\*\*\*\*



# Gachon Gil Foundation

“

The Gachon Gil Foundation is Korea's leading comprehensive public-interest foundation, embracing medicine, education, media, and community service.

”

## Healthcare



- Gachon University Gil Medical Center
- Gachon University Affiliated Dongincheon Gil Hospital
- Gachon University Affiliated Gil Korean Medicine Hospital



## Research

- Gachon Neuroscience Research Institute
- Lee Gil-Ya Cancer & Diabetes Institute
- Gachon BioNano Research Institute
- Bio Research Complex (BRC)
- Gachon Brain Valley



## Society & Culture

- Gachon Cultural Foundation
- Gachon Museum
- Gachon Lee Gil-Ya Obstetrics & Gynecology Memorial Hall



## Education

- Gachon University
- Gachon University Medical Campus
- Gachon University Ganghwa Campus
- Gachon Global Center (Hawaii)
- Shinmyeong Girls' High School
- Gachon Human Resources Development Institute



## Service

- Gachon Youth Volunteer Corps
- New Life Movement Headquarters
- Gachon Medical Lions Club
- Gachon Nuri





21 Namdong-daero 774beon-gil, Namdong-gu, Incheon  
[www.gilhospital.com](http://www.gilhospital.com)



Korean



English



Chinese



Russian



Mongolian